

Tutorial

Candle holder

-Rolling technique



Embellish your home with customised decorations made from high-quality Sort-Ton from GLOREX

- Natural, especially soft and pliable clay
- Air-drying and suitable for the kiln
- Customised painting and design





Material:

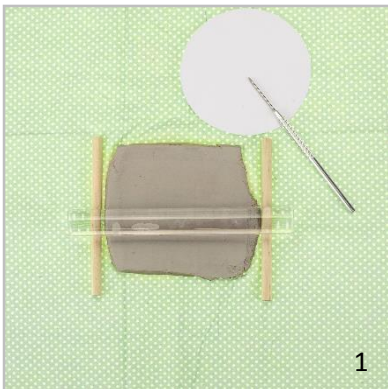
- 6 8075 101 Soft-Ton
- 6 8700 050 Acrylic roller
- 6 8076 30 Modelling tool set
- 0 0848 Mixing bowl
- 2 2620 30 Potter's wheel
- 6 8619 663 Fabric piece

You will also need a slip glass, knife, template, bags or foil, a wooden board and wooden sticks

Instructions:

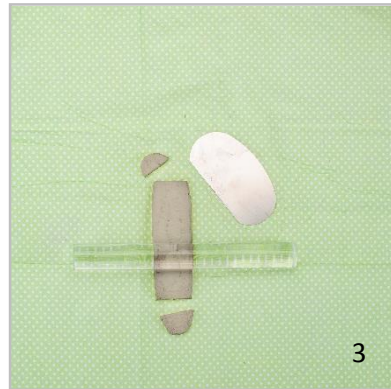
1 Remove the clay from the packaging and knead well. Then roll out the clay between two wooden sticks on the cloth, cut out according to the circle template and place on the table edge disc.

2 Roll the clay into an even bead with both hands. Roughen the edge of the clay circle and the bead. Place the bead on the edge of the clay circle and smooth down the inside with your thumb. Finish with the modelling stick. Then join the outside of the bead to the base by smoothing it out. Smooth this out with the modelling stick too. Work two or three more beads in the same way.

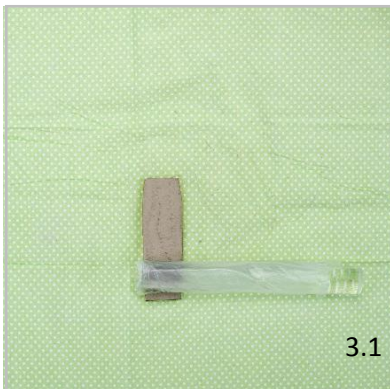




2.2



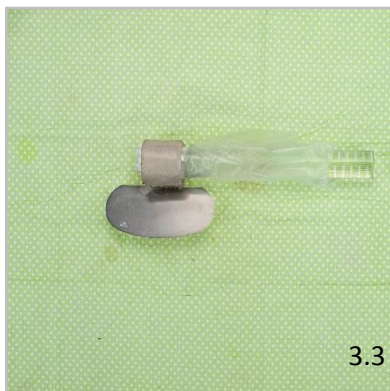
3



3.1



3.2



3.3

2 Once the desired height has been reached, smooth the workpiece with a damp sponge. Use a wet knife to cut off the edge at the same height.

3 Roll out a thick bead for the candle holder. Then roll over the bead with the acrylic roller to create a wide ribbon. Cut to the desired height and length. This will determine the size and diameter of the candle holder.

TIP: Soft-Ton has a shrinkage of approx. 10 %. This must be taken into account when sizing the spout so that the candle fits in the end.

4 Pull thin film over the acrylic roller and lay the clay ribbon over it. Join the beginning and end together. Pull out the acrylic roller and then remove the foil. Smooth out any cracks on the spout with the modelling stick or fill in with slip. ("slip" is clay mixed with water to form a paste)

5 Brush this slip onto the bottom edge of the spout and secure the spout in the plate in the desired position. After it has dried completely (approx. 2 days), you can sand the unevenness with sandpaper. The candle holder can now be painted and decorated as desired.





Have fun & good success

More beautiful inspirations on
glorex.com

